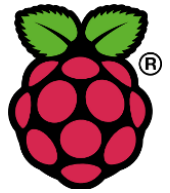




Timekoin Software Image for Raspberry Pi (rev B 512MB)



Summary: This user guide does not cover the technical installation of the Timekoin image onto your [Raspberry Pi](#) device. This covers after installation (image load on SD card) and your Pi device is now booted up for the first time.

After Installation: The default image is set for automatic IP assignment via DHCP. When the Pi Ethernet is plugged into your local network, it will obtain an IP from your router/firewall/gateway device. The device default name is “timekoin-pi” so it should aid in finding the device in your router’s DHCP assignment tables.

Log In for the First Time: Now that you know the IP address of your Pi device, you can login to Timekoin using this in your web browser:

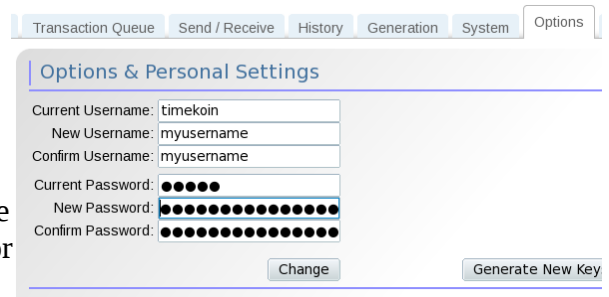
<http://ip.address.here/timekoin/>

The default log in user-name is “timekoin” and the password is “12345”

Once you have successfully logged in, it is recommend to first change the username and password to one you will know and remember.

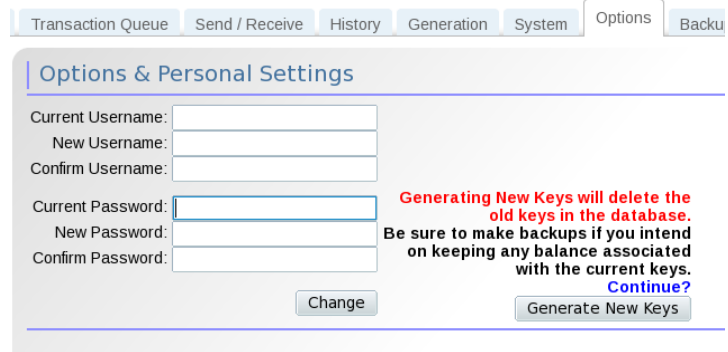


Start by clicking on the “Options” tab at the top, then you will be able to set a new username and password for your Timekoin device. Click the “Change” button to save the personal settings.



Next you want to generate a new key pair for the device. By default the default image has no key pair generated. You will not be able to send or receive any transactions, nor generate any currency without one.

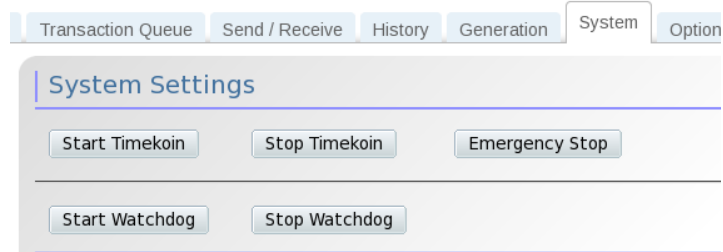
To resolve this issue, in the same “Options” area, click the “Generate New Keys” button. Click the button again after the warning message to generate a new private/public key pair.



No further configuration is necessary, you can now go to the “System” tab and start the Timekoin system. For the Raspberry Pi device, it is also recommended starting the “Watchdog” scripts as well.

To check the status of Timekoin, click the “Home” tab to see if all aspects of Timekoin are now running properly.

Your Timekoin Raspberry Pi device is now ready to use!



Advanced User Section

**** This next section covers more advanced features of the Timekoin Raspberry Pi device, be careful about changing any advanced settings that you do not understand or you might render your Pi device inactive.**

This section covers more advanced parts of the Timekoin Raspberry Pi device that the user can access.

PhpMyAdmin:

The image has a copy of phpMyAdmin installed for access. This will allow you to visually look at the database from any compatible web browser.

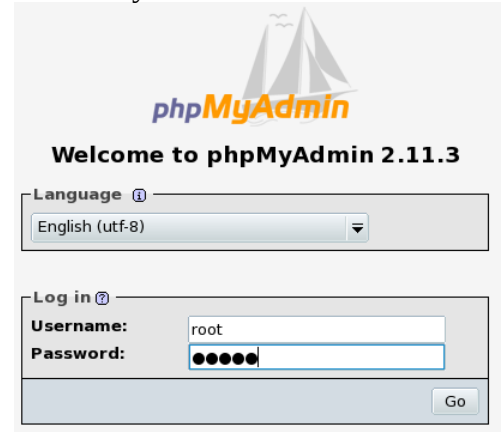
To access the page, go here in your web browser.

<http://ip.address.here/phpmyadmin/>

Once you have the page open, the default username and password to access the database is “root”, using password “12345”.

You can now visual surf around the Timekoin database to see what kind of data is stored, even browse various tables that Timekoin uses.

This can even be used to diagnose issues with Timekoin should it be anything that is database related.



Webmin:

Webmin allows the user a visual interface for managing aspects of the underlining Arch Linux operating system that empowers the device to run Timekoin. The Arch Linux operating system was chosen for the Timekoin Raspberry Pi image due to it's excellent level of community support and very optimized setup for the Raspberry Pi in terms of speed and stability. The Arch Linux OS is also very stable at running the Raspberry Pi hardware in Turbo mode.

To access Webmin, start with this address to your Pi device.

<http://ip.address.here:10000/>

The default username and password is “timekoin”, using password “12345”.

Once you are logged in, you can chose various modules to explore the OS from the timezoine used, networking and services that run, to the file manager to examine any file in the operating system or tweak system settings that Timekoin uses (such as Apache or PHP).

Command Console:

Finally for those that love the command console, the Pi is setup with SSH login. Simply SSH to the IP address of your Pi and use the following username and password.

Username: timekoin *Password:* 12345

To access a root command console, simply type in “su” and the root password is also “12345” for root access. For the security minded, all passwords can be changed to whatever you prefer to further secure your device.

